

**Background**

The Mission Wye Comprehensive Environmental Cleanup and Responsibility Act (CECRA – state superfund) Facility (MWYE) is approximately seven acres, and located five miles east of Livingston in the now abandoned railroad “wye” where Highway 89 and Interstate 90 intersect. See the figure included in this fact sheet. From 1955 through 1979, Burlington Northern Railroad Company (BNSF) used the location as an industrial landfill for waste from the Livingston Shop Complex CECRA Facility. The waste was placed in unlined cells and contained volatile organic compounds (VOCs), metals, and polycyclic aromatic hydrocarbons (PAHs) that were released to groundwater, soil, or both. MWYE is covered by an April 27, 1990 consent decree and it requires BNSF to perform the cleanup.

BNSF completed a remedial investigation, risk assessment and amendment, feasibility study, and interim cleanup activities. The interim cleanup activities included:

- excavation of soil that was heated to remove contaminants
- off-site disposal of contaminated soil at a licensed landfill
- using vacuum pressure to pull contaminated vapor out of soil and treating it

The previous interim cleanup activities removed the majority of the contamination, but contamination remains in groundwater and subsurface soil vapor.

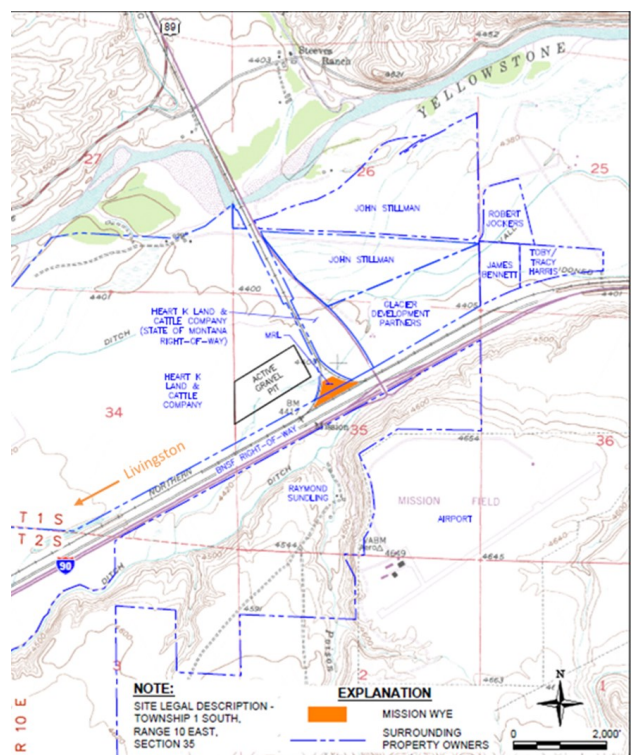
**What’s coming up at MWYE?**

DEQ completed its proposed plan, which is an in-depth look at the cleanup options for MWYE. The proposed plan summarizes the cleanup options DEQ evaluated, and identifies and explains the preferred cleanup option. The final cleanup for MWYE will be selected by DEQ following a 30-day public comment period on the plan and the supporting feasibility study report beginning June 6. The preferred cleanup may be revised in response to public comments or new information. DEQ will select the final cleanup in a record of decision, which will include a response to the public comment DEQ receives.

**Evaluating Cleanup Options**

Groundwater is contaminated with tetrachloroethylene (PCE) and soil vapor is contaminated with PCE and trichloroethylene (TCE). Using information contained in the feasibility study, DEQ evaluated cleanup options to address remaining MWYE contamination. When evaluating cleanup options, DEQ must consider the present and reasonably anticipated future use of MWYE.

**BN Mission WYE Facility Map**



(Continued)

State law requires DEQ to consider seven criteria when proposing, evaluating, and selecting the preferred cleanup option.

**The cleanup options must:**

- Protect public health, safety, and welfare and the environment;
- Meet applicable or relevant state and federal environmental requirements, criteria, or limitations (ERCLs);
- Mitigate exposure to risks to public health, safety, and welfare and the environment;
- Be effective and reliable in the short- and long-term;
- Be technically practicable and implementable;
- Use treatment technologies or resource recovery technologies if practicable, giving due consideration to engineering controls; and
- Be cost effective.

**The cleanup options considered in the MWYE feasibility study and proposed plan are:**

- No Further Action;
- Soil Tilling;
- Soil Vapor Extraction System;
- Institutional Controls; and
- Monitored Natural Attenuation.

**The Preferred Cleanup**

DEQ's preferred cleanup option is a combination of institutional controls (ICs) and monitored natural attenuation (MNA). ICs will provide protection to human health by preventing exposure to contamination by limiting property use across MWYE. MNA is a method of monitoring the natural decrease of contamination in groundwater once the source of contamination is controlled or removed. MNA is preferred because interim cleanup actions have removed the contaminant source, existing data indicates MNA is effective at reducing contamination in groundwater, it is protective of human health and the environment, and a more aggressive cleanup option is not appropriate given the current level of contamination in groundwater. The present value of the preferred cleanup is \$210,800.

**Public Involvement**

The preferred cleanup option discussed in the proposed plan is based on the information included in the feasibility study report and DEQ's files for MWYE. The complete files are available at DEQ's Helena office. The proposed plan and feasibility study report can be viewed at the Livingston-Park County Public Library located at 228 W Callender St. in Livingston, DEQ's office in Helena, and on DEQ's citizen engagement website at <http://deq.mt.gov/Public/publiccomment>.

DEQ encourages the public to comment on both documents. During the public comment period, which ends at 11:59 p.m. on July 6, 2019, the public can send comments in writing to P.O. Box 200901, Helena, MT 59620 or electronically to [HFoslund@mt.gov](mailto:HFoslund@mt.gov). A public meeting is scheduled on June 19, 2019 at 7:00 p.m. at the Community Room located at 414 East Callendar Street in Livingston, Montana to provide additional information and receive oral comments. For additional information, please contact Heather Foslund at 406-444-6745.